



NEWS *IMPACTING* YOU

Issue 2-07

Spring 2007

Salesman Of The Year!

Surestrike is pleased to announce Gary Coomber of Major Machinery in LaQuinta California as the Surestrike sales person of the year for 2006.

Gary has been a Surestrike dealer since 1997. His Surestrike customers range from the largest cement producers to the smaller aggregate producers. When asked about his success selling Surestrike hammers, Gary replied, "My 50 years of experience as a mining engineer has been a lesson in change. Everything changes from the way we drill & blast, to the way we break rock, to the way we haul and the way we process the rock. The "headache ball" was the original rock breaker, then the "cable hung" breaker, then the "hydraulic pecker" and finally the SURESTRIKE with a controlled, positive method of simple operation. My success selling the SURESTRIKE breaker is simple. Find a customer with a hydraulic breaker, provide a TRY for BUY agreement to allow the customer to operate the SURESTRIKE with the agreement that if the Surestrike does the job as stated they buy it. Every one of my TRY for BUYS has been successful. When the user is made aware of all the positive benefits the SURESTRIKE provides (ease of operation, minimum maintenance, increased production, lower price) there is justification to buy the SURESTRIKE!"



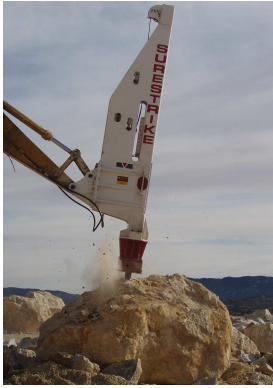
Congratulations Gary on a job well done. Keep up the good work.



New Lean & Mean Surestrike Hammers!!!!

Our new design continues the strong, dependable design of the past but eliminates unnecessary steel and weight. These changes have eliminated about 600# from the model 4000 and moved the center of gravity towards the carrier by nearly 24"! The effects of these changes make for a more mobile, more nimble and lighter weight hammer. All of the existing wear parts, with the exception of the lifting strap, currently used on the model 4000 hammers are interchangeable with the new profile models. The lifting straps of the new profile models are 5 feet shorter than the previous models.

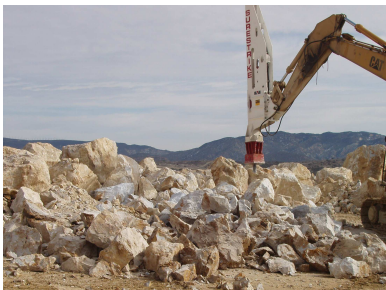
The photo at left shows the new profile as a boom mount. All models are available for an excavator stick or boom mount as well as mounting to a loader.



High Production Breaking:

Southwest Lehigh Cement, a major western US Portland cement producer successfully uses the Surestrike model 2100 to break their limestone oversize boulders. Prior to using the Surestrike, they operated a 5,000 foot pound hydraulic hammer but maintenance costs were high, production relatively low and the hammer had worn out. The Surestrike model 2100 breaks the largest of the oversize boulders (8' and larger), in just a few blows at a rate in excess of 100 TPH. The boulder shown above was estimated to be 80 tons and was broken into 39" minus crusher feed in 35 minutes (See below).

Andy Sherman, Quarry Supervisor, says, "This Surestrike kicks. I now have hundreds of tons of 'crusher ready' high grade ore made from all the huge oversize. Everyone with oversize in a quarry, mine or pit should own a Surestrike."



Tips for success:

For maximum striker pin life, align the striker pin at a 90° angle to the rock to be broken. An angle of less than 90° increases the risk of a broken striker pin due to side stressing.

It is better to operate the Surestrike hammer at an angle rather than to operate the striker pin at an angle not at 90° to the surface to be broken.

The Surestrike hammers will operate at up to a 45° angle to the ground.



Fun Facts To Know And Tell:

The bit or striker pin of a Surestrike hammer will last 5-6 times longer than a conventional hydraulic hammer bit. This is due to fewer blows required to break the material with the Surestrike (fewer blows = less heat build up = less wear).

SURESTRIKE INTERNATIONAL , INC.

P.O. Box 358 Luck, WI 54853

Toll Free: 866-472-8844

Fax: 715-472-8845

www.surestrike.biz

info@Surestrike.biz